

Mirabelle

FIG TREE & CO



FT 981/FT 981G *Star Struck* Size: 75" x 75"



FT 980/FT 980G *Al Fresco* Size: 62" x 62"

In the middle of designing this collection, I had the occasion to drive through the farmlands and blooming orchards of Northern California on my way to teach a seminar. Somewhere far along the backroads, without another soul in sight, I started dreaming of fruit stands and jams, of summer flowers and dresses billowing in the summer winds. This collection makes me think of that kind of farmland summer and even though I have never lived on a farm, I long to be a farm girl at heart.



No 20222 15
Sunlight



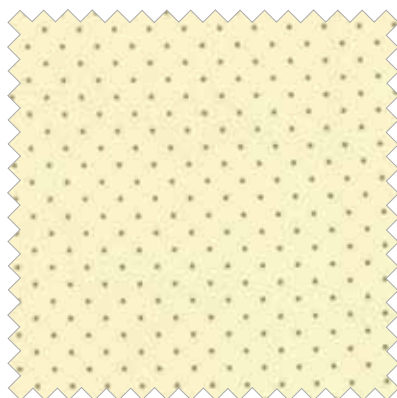
No 20227 15*
Sunlight



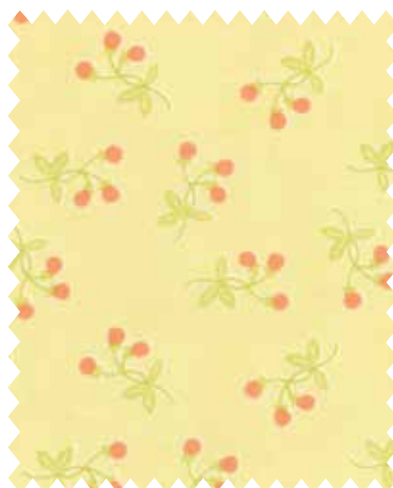
No 20221 15
Sunlight



No 20220 15*
Sunlight



No 20228 18
Bark



No 20225 15*
Sunlight



1



2



3

1 FT 984
FT 984G
Pinecones
Size: 3"x3"

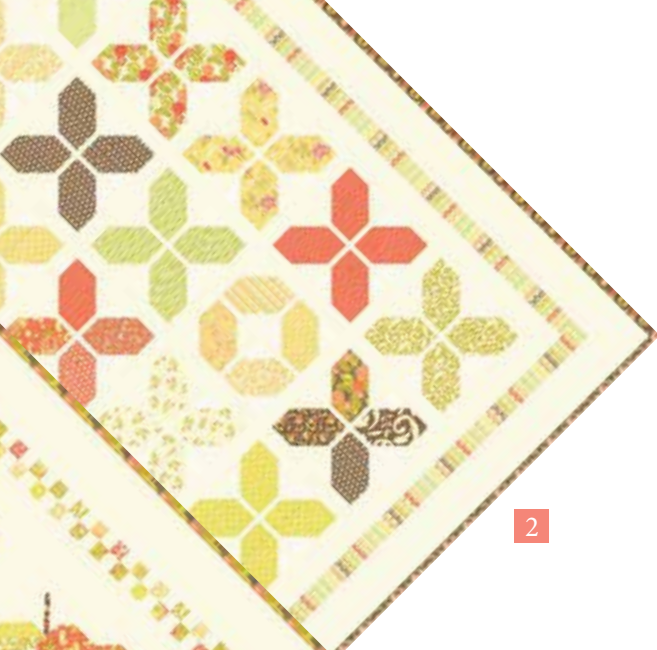
2 FT 986
FT 986G
Everyday Zips
Size: 7"x8½"

3 FT 985
FT 985G
Mason Jars
Size: 26"x30"

- 1 FT 982/FT 982G *Carousel* Size: 72" x 75½"
- 2 FT 983/FT 983G *Hugs* Size: 78" x 89"
- 3 FT 978/FT 978G *Canned Pears* Size: 63½" x 73"



1



2



3



No 20220 12*
Breeze



No 20222 12*
Breeze



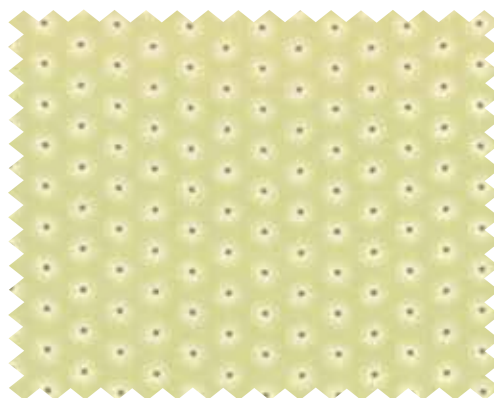
No 20223 12
Breeze



No 20225 12*
Breeze



No 20222 13*
Artichoke



No 20226 12
Breeze



No 20228 12
Breeze



No 20222 16*
Camelia



No 20223 16
Camelia



No 20224 16
Camelia



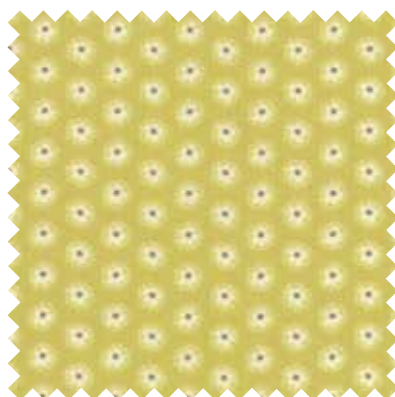
No 20225 16*
Camelia



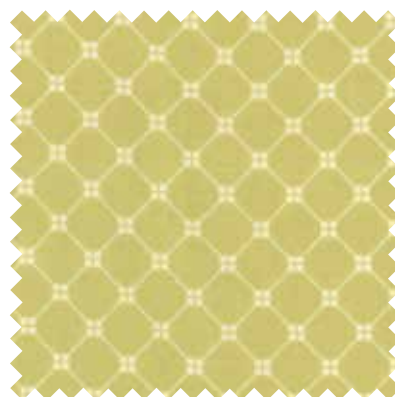
No 20227 16
Camelia



No 20221 13*
Artichoke



No 20226 13*
Artichoke



No 20227 13
Artichoke

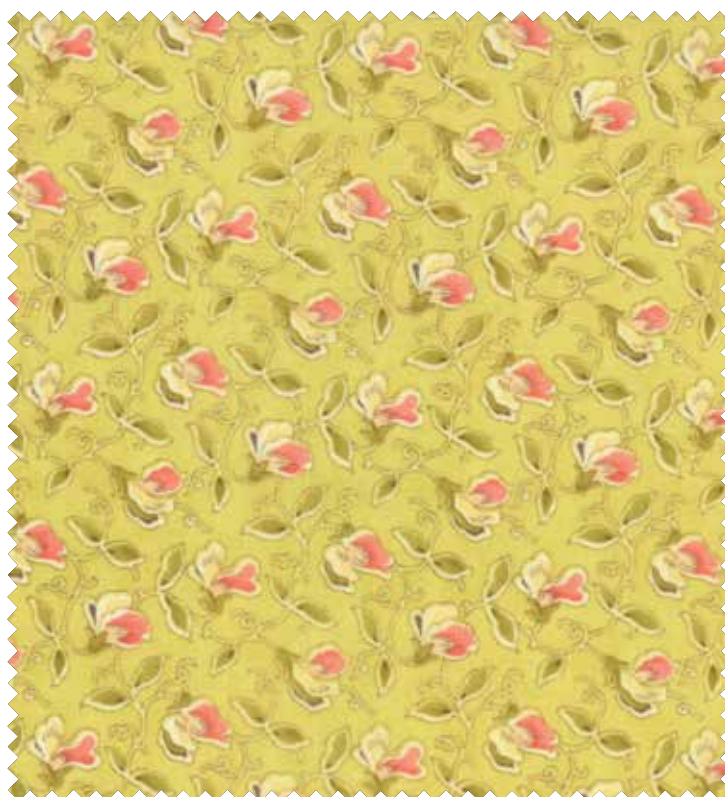
Learn more at *Fresh Figs*
www.figtreequilts.typepad.com



No 20223 11*
Multi



No 20220 13
Artichoke



No 20224 14
Green Apple



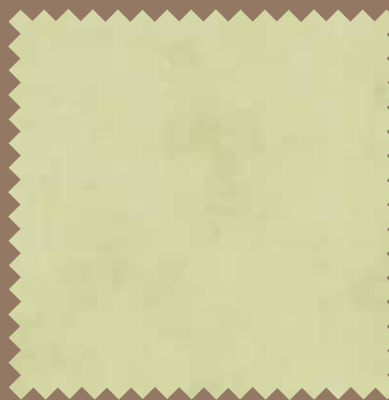
Fig Tree SOLIDS



№ 20229 11
Daisy



№ 20229 17
Persimmon



№ 20229 12
Breeze



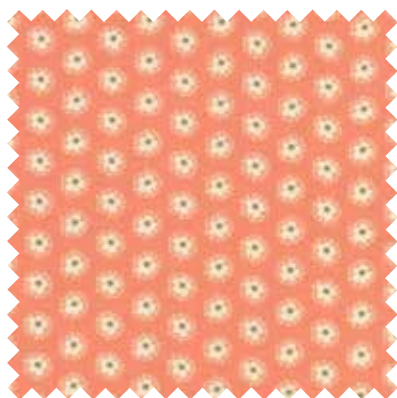
№ 20221 11*
Daisy



№ 20224 11*
Daisy



№ 20222 17
Persimmon



№ 20226 17*
Persimmon



№ 20228 17
Persimmon



№ 20220 17*
Persimmon



№ 20224 17*
Persimmon



No 20225 11
Daisy



No 20221 18*
Bark



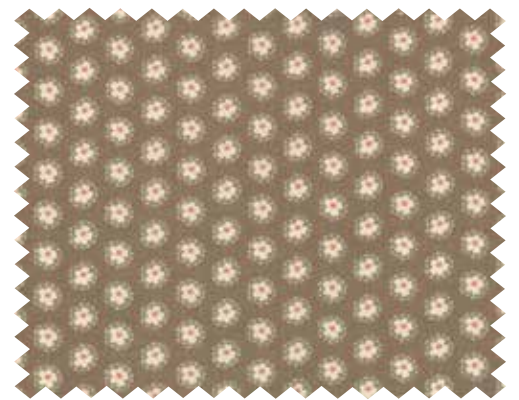
FT 979/FT 979G Spools Quartet Size: 67½" x 67½"



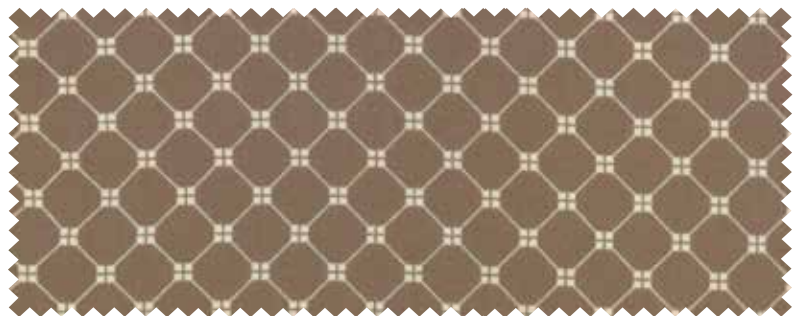
No 20224 18*
Bark



No 20222 18
Bark



No 20226 18*
Bark



No 20227 18
Bark

